



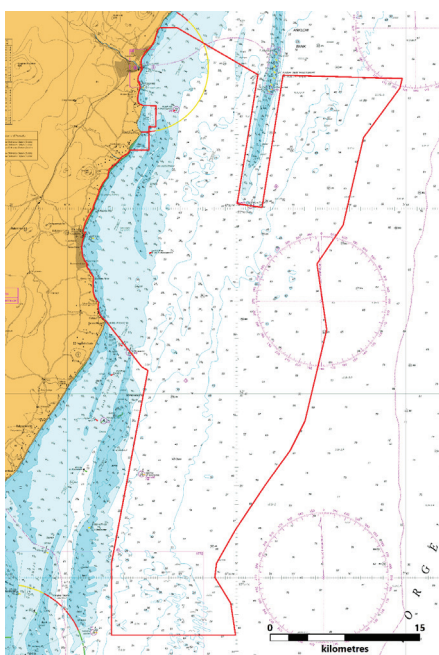
# SOUTH IRISH SEA GEOTECHNICAL SURVEYS

## Survey summary:

**Start Date:** mid-June to end August in two distinct phases (weather dependant)

**Duration:** Phase 1 c. 2 weeks (mid-June, weather & progress dependant)

Phase 2 c. 4 weeks (mid-July, weather & progress dependant)



## Type of survey:

### Phase 1 - CPT (Cone Penetration Testing)

A CPT rig (shown left) will be lowered to the seabed from a suitable vessel. A cylindrical penetrometer with a conical tip (cone with a c. 4.5 cm diameter) will then be pushed into the seabed at a constant speed until it meets resistance. The cone will then be returned to the rig and the rig returned to the vessel.

### Phase 2 - Borehole

A borehole is a method of drilling into the seabed to recover samples and allow downhole geotechnical testing to be carried out. A drilling head is lowered to the seabed via a drill string. The borehole diameter will be c. 15cm (6 inches). The boreholes will be left to back-fill naturally. (Borehole seabed samples shown left.)

### Purpose of survey:

Provide important information on the seabed conditions to determine suitable areas within the survey area for locations of wind turbines and to determine suitable foundation designs.

### Survey Scope:

8 Boreholes (c. 1BH per 65km<sup>2</sup>)

### Vessel Name:

Phase 1: Normand Mermaid (LAXH7)

Phase 2: Fugro Voyager (9V3888)

### Vessel Operator:

Fugro

### Marine Notice:

No. 35 of 2022

### High level project timeline:

Submission of planning - Q3 2023

Earliest start of construction - Q1 2026

Refer to [www.southirishseawind.ie](http://www.southirishseawind.ie) for further details



Fugro Voyager

## Fishing and survey co-existence:

### Engagement

Energia has engaged with fishermen and fishing industry representatives over the past 24 months in relation to the South Irish Sea project to understand the views of fishing industry and the existing activity within the survey area.

### Feedback

In response to feedback in relation to interactions between fishing activities and surveying activities, Energia committed to gathering information on existing fishing activities in the area and to use that information to determine the potential for interaction. Energia has been surveying fishing activity in the area on a largely monthly basis since February 2021. This information along with direct feedback from fishermen has directly fed into our survey planning.

### Approach

Energia is utilising a co-existence approach to the planned survey activity where fishing can continue during the survey period.

This co-existence approach means that Energia will not be asking fishermen to stop fishing or to clear the survey area of gear for the duration of the survey.

